



TallyPrime

## Set Min Max Sales Price Range for Items

### **Tally9 Services**

Address : Up Stair Door No: 16-399-8-6-2 Ghouse Nagar – A.P State -516001  
Website : [www.tally9services.com](http://www.tally9services.com)  
Contact : +91 8341772407  
Email : [tally9services@gmail.com](mailto:tally9services@gmail.com)

## Note:

### Important!

As a Best Practice it is Advisable to Take Back Up of Your Company Data Before installing the Add-on

## Setup Guide

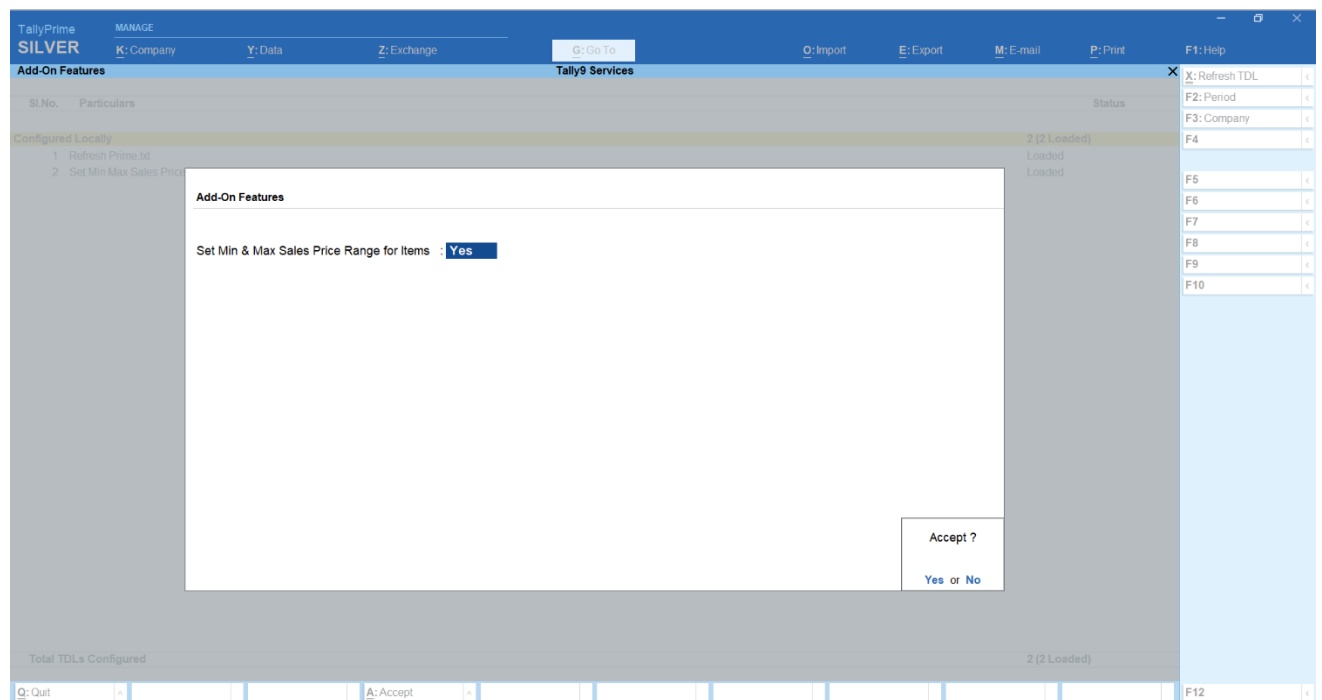
1. Shut down and Restart Tally ERP & Tally Prime and open your company.
2. Activate the Add-on

### For Tally ERP and Tally Prime

Go to **Gateway of Tally > F1 > TDL & Add-on > F6:Add-on Features**

Set “Yes” to the options

### Image-1



## Image-2

<b>Configuration</b>	
<i>Show more configurations</i>	: <b>Yes</b>
<i>Show all configurations</i>	: <b>Yes</b>
<b>General Details</b>	
Provide aliases for Name	: <b>No</b>
Provide language aliases for Name	: <b>No</b>
Provide Part No. for Stock Items	: <b>No</b>
Provide Descriptions for Stock Items	: <b>No</b>
Provide Notes for Stock Items	: <b>No</b>
<b>Inventory Details</b>	
Use Stock Group for Stock Items	: <b>Yes</b>
Use Stock Category for Stock Items	: <b>No</b>
Provide Units of Measurement (UoM) for Stock Items	: <b>Yes</b>
Use Alternate Units	: <b>No</b>
Set Components List (Bill of Materials) in Stock Items	: <b>No</b>
Provide Standard Buying and Selling Rates	: <b>No</b>
Provide MRP Details	: <b>No</b>
Set default Accounting Allocations for Stock Items (in Invoice Mode)	: <b>No</b>
Use Costing and Market Valuation Methods for Stock Items	: <b>No</b>
Set options for Stock Item Behaviour	: <b>No</b>
Provide Opening Balances for Stock Items	: <b>Yes</b>

Image-3

TallyPrime		MANAGE		G: Go To		O: Import		E: Expd																													
SILVER		K: Company		Y: Data		Z: Exchange																															
<b>Stock Item Alteration</b>					<b>Tally9 Services</b>																																
Name : <b>Item -A</b>																																					
Under : <b>Stock Group</b> Units : <b>Nos</b> Min/Max Rate Control : <b>? Yes</b> Minimum Rate : <b>1,000.00</b> Maximum Rate : <b>2,000.00</b>					<b>Statutory Details</b> GST applicability : <b>Applicable</b> <b>HSN/SAC &amp; Related Details</b> HSN/SAC Details : <b>Specify Details Here</b> HSN/SAC : <b>2525</b> Description : <b>GST Rate &amp; Related Details</b> GST Rate Details : <b>Specify Details Here</b> Taxability Type : <b>Taxable</b> GST Rate : <b>18 %</b> Cess Valuation Type : <b>Not Applicable</b> Cess Rate : <b>0 %</b> Applicable for Reverse Charge : <b>No</b> Eligible for Input Tax Credit : <b>Yes</b> Type of Supply : <b>Goods</b> Rate of Duty (eg 5) :																																
<table border="1"> <thead> <tr> <th>Quantity</th> <th>Rate per</th> <th>Value</th> </tr> </thead> <tbody> <tr> <td>Opening Balance</td> <td></td> <td></td> </tr> </tbody> </table>										Quantity	Rate per	Value	Opening Balance																								
Quantity	Rate per	Value																																			
Opening Balance																																					
<table border="1"> <thead> <tr> <th colspan="2">Applicability</th> </tr> </thead> <tbody> <tr> <td><input checked="" type="checkbox"/></td> <td>Applicable</td> </tr> <tr> <td><input type="checkbox"/></td> <td>Not Applicable</td> </tr> </tbody> </table>										Applicability		<input checked="" type="checkbox"/>	Applicable	<input type="checkbox"/>	Not Applicable																						
Applicability																																					
<input checked="" type="checkbox"/>	Applicable																																				
<input type="checkbox"/>	Not Applicable																																				
<table border="1"> <thead> <tr> <th colspan="2">ALTER</th> </tr> </thead> <tbody> <tr> <td colspan="2">CHART of Accounts</td> </tr> <tr> <td colspan="2">TRANSACTIONS</td> </tr> <tr> <td colspan="2">Vouchers</td> </tr> <tr> <td colspan="2">Day Book</td> </tr> <tr> <td colspan="2">UTILITIES</td> </tr> <tr> <td colspan="2">BaNking</td> </tr> <tr> <td colspan="2">REPORTS</td> </tr> <tr> <td colspan="2">Balance Sheet</td> </tr> <tr> <td colspan="2">Profit &amp; Loss A/c</td> </tr> <tr> <td colspan="2">Stock Summary</td> </tr> <tr> <td colspan="2">Ratio Analysis</td> </tr> <tr> <td colspan="2">Display More Reports</td> </tr> <tr> <td colspan="2">Quit</td> </tr> </tbody> </table>										ALTER		CHART of Accounts		TRANSACTIONS		Vouchers		Day Book		UTILITIES		BaNking		REPORTS		Balance Sheet		Profit & Loss A/c		Stock Summary		Ratio Analysis		Display More Reports		Quit	
ALTER																																					
CHART of Accounts																																					
TRANSACTIONS																																					
Vouchers																																					
Day Book																																					
UTILITIES																																					
BaNking																																					
REPORTS																																					
Balance Sheet																																					
Profit & Loss A/c																																					
Stock Summary																																					
Ratio Analysis																																					
Display More Reports																																					
Quit																																					

Image-4

The screenshot shows the 'Accounting Voucher Creation' window in TallyPrime. The window title is 'Tally9 Services'. The voucher type is 'Sales', number '1', dated '1-Apr-2023'. The party is 'Mr Khader' and the ledger is 'Sales GTS'. The item 'Item-A' is listed with a quantity of 1 and a rate of 900.00. An error dialog box is displayed in the bottom right corner with the following text:

**Error**  
**Oops!**  
Incorrect Rate!  
Enter rate between 1,000.00 to 2,000.00

Name of Item	Quantity	Rate per	Amount
Item-A	1 Nos	900.00 Nos	900.00

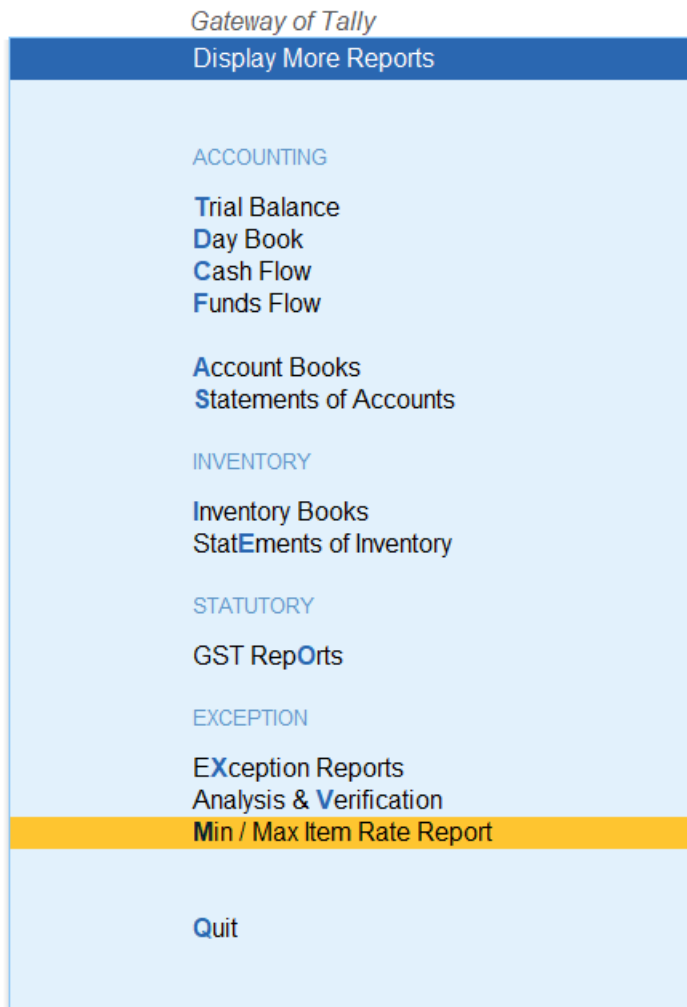
Image-5

The screenshot shows the 'Accounting Voucher Creation' window in TallyPrime, identical to Image-4 but with the rate for 'Item-A' changed to 2,001.00. The error dialog box is displayed in the bottom right corner with the following text:

**Error**  
**Oops!**  
Incorrect Rate!  
Enter rate between 1,000.00 to 2,000.00

Name of Item	Quantity	Rate per	Amount
Item-A	1 Nos	2,001.00 Nos	2,001.00

**Image-6**



**Image-7**

S.No.	Name of Item	Rate Control	Minimum Rate	Maximum Rate
1.	Item-A	Yes	1,000.00	2,000.00

## FAQ

### **Which version/release of TallyPrime does the add-on support?**

This add-on will work only from TallyPrime Release 1.0 above

### **How will I get support for this add-on?**

For any Functional support Requirements Please do write to us on [www.tally9services.com](http://www.tally9services.com) or call us at +91 83417 72407. Alternatively, you can send a support query to [support@tally9services.com](mailto:support@tally9services.com)

### **If I need some enhancements / changes to be incorporated for the add-on, whom should I contact?**

Please to write to us on [tally9services@gmail.com](mailto:tally9services@gmail.com) with your additional requirements and we will revert to you in 24 business hours.